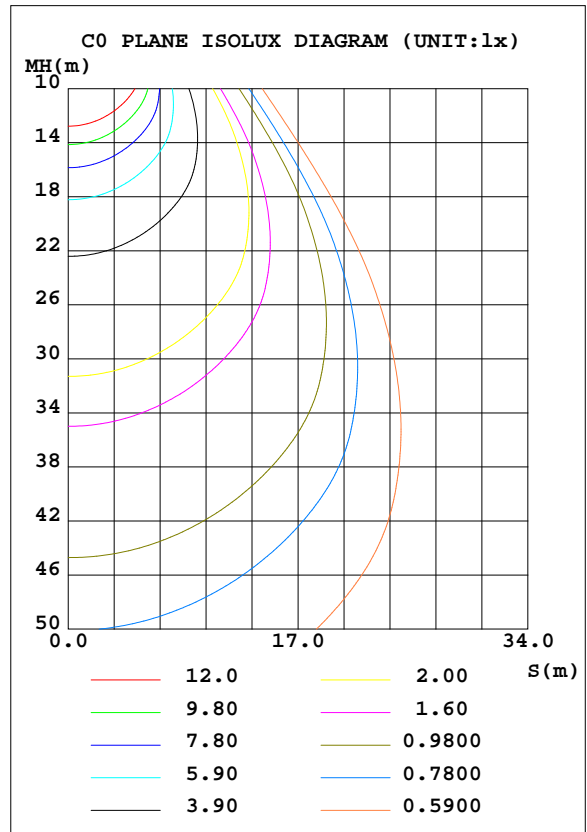
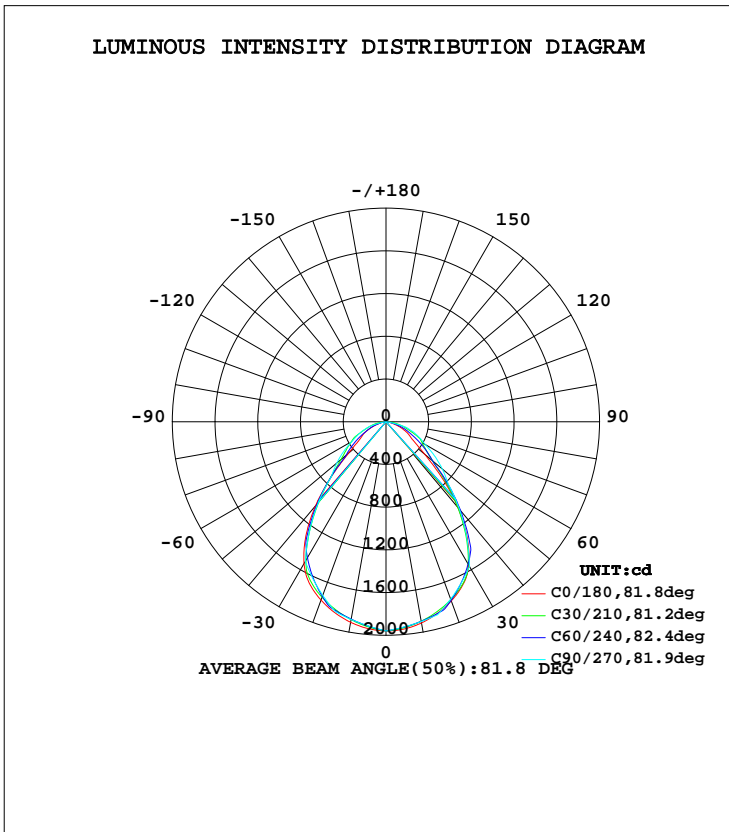


LUMINAIRE PHOTOMETRIC TEST REPORT

Test:U:230.0V I:0.1357A P:30.66W PF:0.9821 Lamp Flux:3646.21x1 lm		
NAME: IL-PN195U(S) 4.000K	TYPE:	WEIGHT:
SPEC.:	DIM.:	SERIAL No.:
MFR.: EVERFINE	SUR.:250*1150	PROTECTION ANGLE:

DATA OF LAMP		PHOTOMETRIC DATA Eff: 118.94 lm/W			
MODEL	IL-PN195U(S)	I _{max} (cd)	1959	S/MH(C0/180)	1.17
NOMINAL POWER(W)	32	LOR(%)	100.0	S/MH(C90/270)	1.15
RATED VOLTAGE(V)	230.0	TOTAL FLUX(lm)	3646.2	η UP, DN(C0-180)	0.0, 51.2
NOMINAL FLUX(lm)	3646.21	CIE CLASS	DIRECT	η UP, DN(C180-360)	0.0, 48.8
LAMPS INSIDE	1	η up(%)	0.0	CIBSE SHR NOM	1.25
TEST VOLTAGE(V)	230.0	η down(%)	100.0	CIBSE SHR MAX	1.25



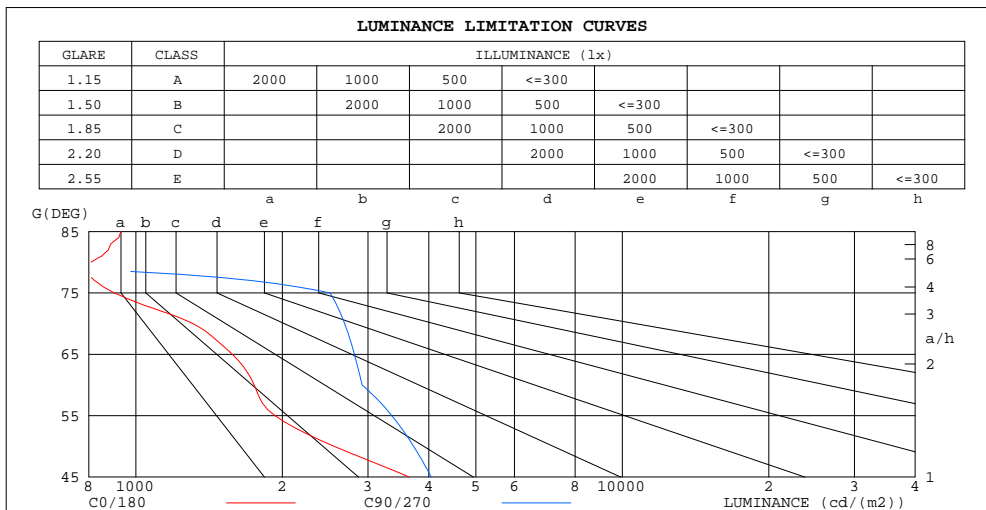
C Range: 0 - 360DEG
 C Interval: 5.0DEG
 Test Speed: HIGH
 Temperature: 25.3DEG
 Operators: DAMIN
 Test Date: 2023-06-21

γ Range: 0 - 90DEG
 γ Interval: 0.5DEG
 Test System: EVERFINE GO-2000A_V1 SYSTEM V2.0.286
 Humidity: 65.0%
 Test Distance: 13.420m [K=1.0000]
 Remarks: IL-PN195U(S) 4.000K 32W NW

ZONAL FLUX DIAGRAM
AND LUMINANCE LIMITATION CURVES

ZONAL FLUX DIAGRAM:

γ	C0	C45	C90	C135	C180	C225	C270	C315	γ	Φ zone	Φ total	#lum,lamp
5	1948	1933	1929	1930	1943	1923	1919	1926	0- 5	46.40	46.40	1.27,1.27
10	1913	1896	1899	1892	1907	1877	1880	1882	5- 10	136.6	183.0	5.02,5.02
15	1858	1850	1870	1845	1851	1824	1840	1828	10- 15	221.4	404.4	11.1,11.1
20	1786	1794	1768	1791	1778	1763	1730	1766	15- 20	297.3	701.7	19.2,19.2
25	1694	1673	1666	1668	1683	1631	1621	1636	20- 25	358.4	1060	29.1,29.1
30	1552	1516	1565	1509	1534	1458	1511	1465	25- 30	401.0	1461	40.1,40.1
35	1327	1325	1317	1317	1309	1249	1247	1256	30- 35	413.9	1875	51.4,51.4
40	1047	1098	1070	1089	1025	1006	983.8	1012	35- 40	387.7	2263	62.1,62.1
45	741.4	831.0	822.7	824.4	717.2	753.6	720.2	768.1	40- 45	331.9	2595	71.2,71.2
50	472.4	609.9	688.3	606.8	457.8	551.6	601.5	572.1	45- 50	265.2	2860	78.4,78.4
55	318.5	446.6	553.9	441.4	316.2	394.9	482.8	417.5	50- 55	213.9	3074	84.3,84.3
60	251.7	360.0	419.5	357.9	253.6	315.9	364.1	333.3	55- 60	175.0	3249	89.1,89.1
65	191.8	279.1	341.8	282.1	193.4	264.1	289.4	275.8	60- 65	141.9	3391	93,93
70	128.9	209.1	264.2	210.7	128.4	212.9	214.7	223.6	65- 70	110.4	3501	96,96
75	67.12	164.6	186.5	164.9	68.93	154.8	140.0	165.7	70- 75	80.31	3581	98.2,98.2
80	40.37	109.0	0	108.5	44.30	89.24	0	96.77	75- 80	47.59	3629	99.5,99.5
85	23.36	0	0	0	25.14	0	0	0	80- 85	15.45	3644	100,100
90	0.4273	0	0	0	0.5072	0	0	0	85- 90	1.791	3646	100,100
95									90- 95			
100									95-100			
105									100-105			
110									105-110			
115									110-115			
120									115-120			
125									120-125			
130									125-130			
135									130-135			
140									135-140			
145									140-145			
150									145-150			
155									150-155			
160									155-160			
165									160-165			
170									165-170			
175									170-175			
180									175-180			
DEG	LUMINOUS INTENSITY:cd									UNIT:lm		



LUMINANCE cd/(m2)		
G(DEG)	C0/180	C90/270
85	932	0
80	809	0
75	902	2507
70	1311	2687
65	1578	2813
60	1751	2918
55	1931	3359
50	2556	3724
45	3647	4047

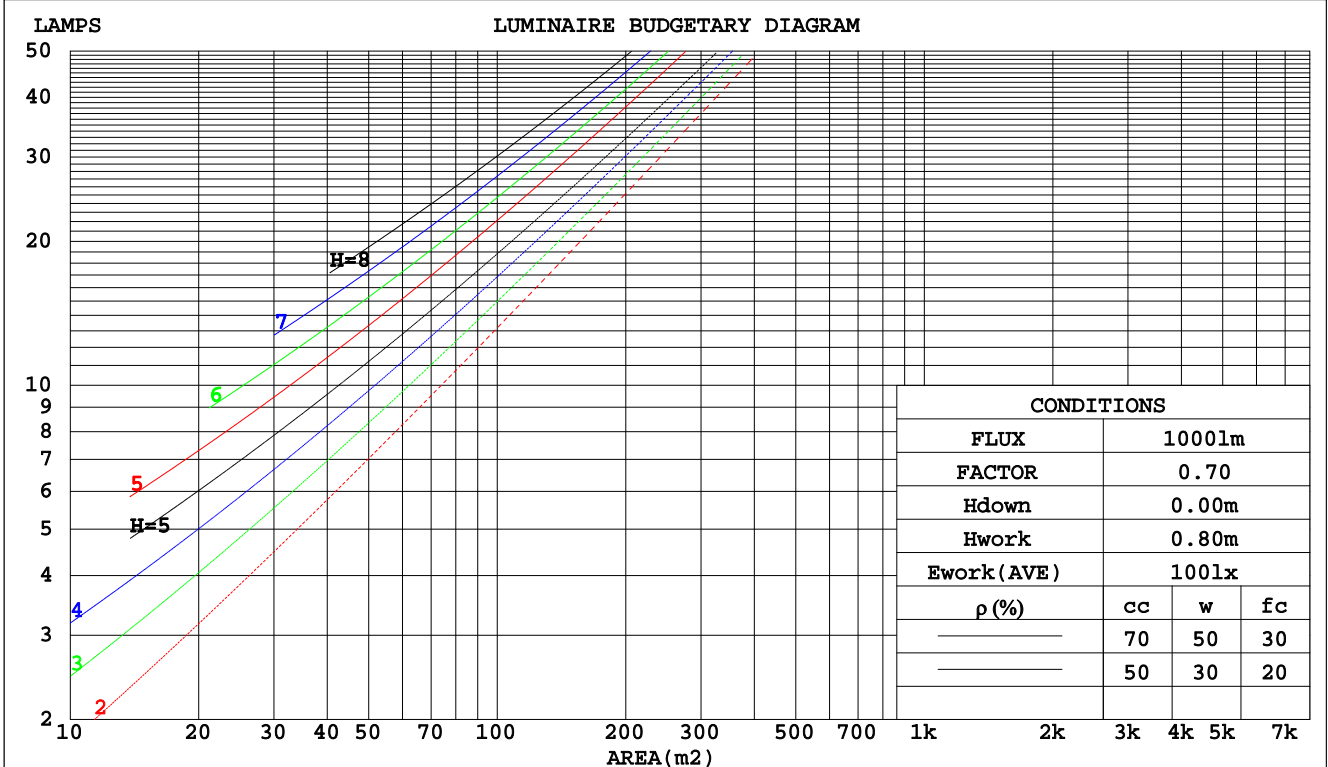
C Range: 0 - 360DEG
C Interval: 5.0DEG
Test Speed: HIGH
Temperature:25.3DEG
Operators:DAMIN
Test Date:2023-06-21

γ Range: 0 - 90DEG
γ Interval: 0.5DEG
Test System:EVERFINE GO-2000A_V1 SYSTEM V2.0.286
Humidity:65.0%
Test Distance:13.420m [K=1.0000]
Remarks: IL-PN195U(S) 4.000K 32W NW

CU AND LUMINAIRE BUDGETARY ESTIMATE DIAGRAM

Test:U:230.0V I:0.1357A P:30.66W PF:0.9821 Lamp Flux:3646.2lx1 lm		
NAME: IL-PN195U(S) 4.000K	TYPE:	WEIGHT:
SPEC.:	DIM.:	SERIAL No.:
MFR.: EVERFINE	SUR.:250*1150	PROTECTION ANGLE:

pcc	80%			70%			50%			30%			10%			0
pw	50%	30%	10%	50%	30%	10%	50%	30%	10%	50%	30%	10%	50%	30%	10%	0
pfc	20%			20%			20%			20%			20%			0
RCR	RCR:Room Cavity Ratio						Coefficients of Utilization(CU)									
0.0	1.19	1.19	1.19	1.16	1.16	1.16	1.11	1.11	1.11	1.06	1.06	1.06	1.02	1.02	1.02	1.00
1.0	1.07	1.03	1.00	1.05	1.02	.99	1.01	.98	.96	.97	.95	.93	.93	.92	.90	.88
2.0	.96	.90	.85	.94	.89	.84	.90	.86	.82	.87	.84	.80	.84	.81	.79	.77
3.0	.86	.79	.73	.84	.78	.73	.82	.76	.72	.79	.74	.70	.77	.73	.69	.67
4.0	.78	.70	.64	.76	.69	.64	.74	.68	.63	.72	.66	.62	.70	.65	.61	.59
5.0	.71	.63	.57	.69	.62	.57	.67	.61	.56	.66	.60	.55	.64	.59	.55	.53
6.0	.64	.56	.51	.63	.56	.51	.62	.55	.50	.60	.54	.50	.59	.53	.49	.48
7.0	.59	.51	.46	.58	.51	.46	.57	.50	.45	.55	.49	.45	.54	.49	.45	.43
8.0	.54	.47	.41	.54	.46	.41	.53	.46	.41	.51	.45	.41	.50	.45	.41	.39
9.0	.50	.43	.38	.50	.43	.38	.49	.42	.38	.48	.42	.37	.47	.41	.37	.36
10.0	.47	.40	.35	.46	.39	.35	.45	.39	.35	.45	.39	.34	.44	.38	.34	.33



C Range: 0 - 360DEG
 C Interval: 5.0DEG
 Test Speed: HIGH
 Temperature:25.3DEG
 Operators:DAMIN
 Test Date:2023-06-21

γ Range: 0 - 90DEG
 γ Interval: 0.5DEG
 Test System:EVERFINE GO-2000A_V1 SYSTEM V2.0.286
 Humidity:65.0%
 Test Distance:13.420m [K=1.0000]
 Remarks: IL-PN195U(S) 4.000K 32W NW

WEC AND CCEC

Test:U:230.0V I:0.1357A P:30.66W PF:0.9821 Lamp Flux:3646.21x1 lm		
NAME: IL-PN195U(S) 4.000K	TYPE:	WEIGHT:
SPEC.:	DIM.:	SERIAL No.:
MFR.: EVERFINE	SUR.:250*1150	PROTECTION ANGLE:

ρcc	80%			70%			50%			30%			10%			0
ρw	50%	30%	10%	50%	30%	10%	50%	30%	10%	50%	30%	10%	50%	30%	10%	0
ρfc	20%			20%			20%			20%			20%			0
RCR	RCR:Room Cavity Ratio						Wall Exitance Coefficients(WEC)									
0.0																
1.0	.251	.143	.045	.244	.139	.044	.231	.132	.042	.219	.126	.040	.208	.120	.039	
2.0	.241	.132	.041	.235	.130	.040	.224	.125	.039	.214	.120	.038	.204	.116	.036	
3.0	.228	.121	.036	.223	.119	.036	.213	.115	.035	.204	.112	.034	.195	.108	.033	
4.0	.214	.111	.033	.209	.109	.032	.200	.106	.032	.192	.103	.031	.185	.100	.031	
5.0	.200	.102	.030	.196	.101	.029	.189	.098	.029	.181	.096	.028	.175	.093	.028	
6.0	.188	.094	.027	.185	.093	.027	.178	.091	.026	.171	.089	.026	.165	.087	.026	
7.0	.177	.087	.025	.174	.087	.025	.168	.085	.024	.162	.083	.024	.157	.081	.024	
8.0	.167	.082	.023	.164	.081	.023	.159	.079	.023	.153	.078	.022	.149	.076	.022	
9.0	.158	.076	.021	.155	.076	.021	.150	.074	.021	.146	.073	.021	.141	.072	.021	
10.0	.149	.072	.020	.147	.071	.020	.143	.070	.020	.138	.069	.020	.135	.068	.019	

ρcc	80%			70%			50%			30%			10%			0
ρw	50%	30%	10%	50%	30%	10%	50%	30%	10%	50%	30%	10%	50%	30%	10%	0
ρfc	20%			20%			20%			20%			20%			0
RCR	RCR:Room Cavity Ratio						Ceiling Cavity Exitance Coefficients(CCEC)									
0.0	.190	.190	.190	.163	.163	.163	.111	.111	.111	.064	.064	.064	.020	.020	.020	
1.0	.176	.157	.139	.151	.134	.120	.103	.092	.083	.059	.054	.048	.019	.017	.016	
2.0	.166	.132	.104	.142	.114	.090	.097	.079	.063	.056	.046	.037	.018	.015	.012	
3.0	.156	.114	.080	.134	.098	.070	.092	.068	.049	.053	.040	.029	.017	.013	.009	
4.0	.148	.100	.064	.127	.087	.055	.087	.060	.039	.051	.035	.023	.016	.012	.008	
5.0	.141	.089	.052	.121	.077	.045	.083	.054	.032	.048	.032	.019	.016	.010	.006	
6.0	.134	.081	.043	.115	.070	.037	.079	.049	.026	.046	.029	.016	.015	.009	.005	
7.0	.127	.074	.036	.109	.064	.032	.076	.045	.022	.044	.026	.013	.014	.009	.004	
8.0	.121	.068	.031	.104	.059	.027	.072	.041	.019	.042	.024	.011	.014	.008	.004	
9.0	.116	.063	.027	.100	.055	.024	.069	.038	.017	.040	.023	.010	.013	.007	.003	
10.0	.110	.059	.024	.095	.051	.021	.066	.036	.015	.039	.021	.009	.012	.007	.003	

C Range: 0 - 360DEG
 C Interval: 5.0DEG
 Test Speed: HIGH
 Temperature:25.3DEG
 Operators:DAMIN
 Test Date:2023-06-21

γ Range: 0 - 90DEG
 γ Interval: 0.5DEG
 Test System:EVERFINE GO-2000A_V1 SYSTEM V2.0.286
 Humidity:65.0%
 Test Distance:13.420m [K=1.0000]
 Remarks: IL-PN195U(S) 4.000K 32W NW

UGR(Unified Glare Rating) Table

Test:U:230.0V I:0.1357A P:30.66W PF:0.9821 Lamp Flux:3646.2lx1 lm										
NAME: IL-PN195U(S) 4.000K					TYPE:			WEIGHT:		
SPEC.:					DIM.:			SERIAL No.:		
MFR.: EVERFINE					SUR.:250*1150			PROTECTION ANGLE:		
ceiling/cavity	0.7	0.7	0.5	0.5	0.3	0.7	0.7	0.5	0.5	0.3
walls	0.5	0.3	0.5	0.3	0.3	0.5	0.3	0.5	0.3	0.3
working plane	0.2	0.2	0.2	0.2	0.2	0.2	0.2	0.2	0.2	0.2
Room dimensions	Viewed crosswise					Viewed endwise				
x = 2H y = 2H	15.2	16.5	15.5	16.7	16.9	16.1	17.5	16.4	17.6	17.8
3H	15.8	17.0	16.1	17.3	17.5	17.2	18.4	17.5	18.7	18.9
4H	16.0	17.1	16.3	17.4	17.6	17.7	18.9	18.0	19.1	19.4
6H	16.1	17.2	16.4	17.4	17.7	17.8	18.9	18.1	19.1	19.4
8H	16.1	17.2	16.4	17.4	17.7	17.7	18.8	18.1	19.0	19.3
12H	16.1	17.1	16.5	17.4	17.7	17.7	18.7	18.0	19.0	19.3
4H 2H	15.7	16.9	16.0	17.1	17.4	16.4	17.6	16.7	17.8	18.1
3H	16.7	17.7	17.0	18.0	18.3	17.6	18.6	17.9	18.9	19.2
4H	17.1	18.0	17.4	18.3	18.6	18.1	19.0	18.5	19.3	19.7
6H	17.4	18.2	17.8	18.5	18.9	18.2	19.0	18.6	19.4	19.7
8H	17.5	18.2	17.9	18.6	19.0	18.2	18.9	18.6	19.3	19.6
12H	17.6	18.2	18.0	18.6	19.0	18.1	18.8	18.5	19.2	19.6
8H 4H	17.4	18.1	17.8	18.5	18.9	18.3	19.0	18.7	19.4	19.8
6H	17.9	18.5	18.4	18.9	19.4	18.4	19.0	18.8	19.4	19.8
8H	18.2	18.7	18.6	19.2	19.6	18.3	18.9	18.8	19.3	19.7
12H	18.4	18.9	18.9	19.3	19.8	18.3	18.7	18.8	19.2	19.7
12H 4H	17.3	18.0	17.8	18.4	18.8	18.3	19.0	18.7	19.4	19.8
6H	17.9	18.5	18.4	18.9	19.3	18.4	18.9	18.9	19.4	19.8
8H	18.2	18.7	18.7	19.1	19.6	18.4	18.8	18.8	19.3	19.7
Variations with the observer position at spacings:										
S = 1.0H	+ 0.5 / - 0.6					+ 0.4 / - 0.5				
1.5H	+ 0.5 / - 0.6					+ 0.4 / - 0.4				
2.0H	+ 0.7 / - 1.1					+ 0.9 / - 1.1				

CIE Pub.117 Corrected 3646 lm Total Lamp Luminous Flux.(8log(F/F0) = 4.5)

C Range: 0 - 360DEG
 C Interval: 5.0DEG
 Test Speed: HIGH
 Temperature:25.3DEG
 Operators:DAMIN
 Test Date:2023-06-21

γ Range: 0 - 90DEG
 γ Interval: 0.5DEG
 Test System:EVERFINE GO-2000A_V1 SYSTEM V2.0.286
 Humidity:65.0%
 Test Distance:13.420m [K=1.0000]
 Remarks: IL-PN195U(S) 4.000K 32W NW

UTILIZATION FACTORS TABLE

Test:U:230.0V I:0.1357A P:30.66W PF:0.9821 Lamp Flux:3646.2lx1 lm		
NAME: IL-PN195U(S) 4.000K	TYPE:	WEIGHT:
SPEC.:	DIM.:	SERIAL No.:
MFR.: EVERFINE	SUR.:250*1150	PROTECTION ANGLE:

REFLECTANCE										
Ceiling	0.8	0.8	0.8	0.7	0.7	0.7	0.5	0.5	0.5	0
Walls	0.7	0.5	0.3	0.7	0.5	0.3	0.7	0.5	0.3	0
Working plane	0.2	0.2	0.2	0.2	0.2	0.2	0.2	0.2	0.2	0
ROOM INDEX	UTILIZATION FACTORS(PERCENT) $k(RI) \times RCR = 5$									
k = 0.60	68	58	52	67	58	52	66	57	52	47
0.80	77	68	62	77	68	62	75	67	61	56
1.00	85	76	70	84	75	70	82	76	69	63
1.25	91	83	77	90	82	77	87	81	76	70
1.50	95	87	82	94	87	81	91	85	80	74
2.00	101	94	89	99	93	88	96	91	87	80
2.50	104	98	93	102	96	92	98	94	90	83
3.00	106	101	97	104	99	96	101	97	93	86
4.00	109	105	101	107	103	100	103	100	97	89
5.00	111	108	104	109	106	103	105	102	100	91
ROOM INDEX	UF(total)									Direct
According to DIN EN 13032-2 2004			Suspended				SHRNOM = 1.25			

C Range: 0 - 360DEG
 C Interval: 5.0DEG
 Test Speed: HIGH
 Temperature:25.3DEG
 Operators:DAMIN
 Test Date:2023-06-21

γ Range: 0 - 90DEG
 γ Interval: 0.5DEG
 Test System:EVERFINE GO-2000A_V1 SYSTEM V2.0.286
 Humidity:65.0%
 Test Distance:13.420m [K=1.0000]
 Remarks: IL-PN195U(S) 4.000K 32W NW

ISOCANDELA DIAGRAM

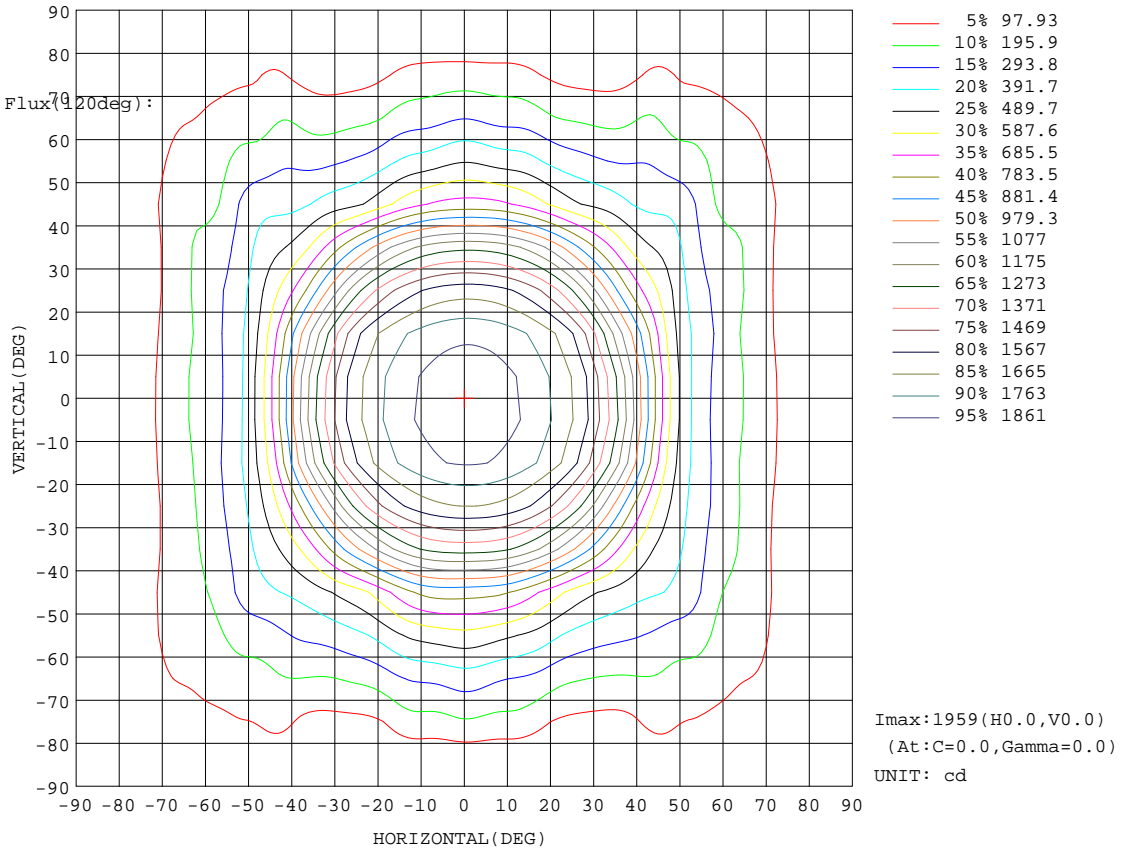
Test:U:230.0V I:0.1357A P:30.66W PF:0.9821 Lamp Flux:3646.21x1 lm		
NAME: IL-PN195U(S) 4.000K	TYPE:	WEIGHT:
SPEC.:	DIM.:	SERIAL No.:
MFR.: EVERFINE	SUR.:250*1150	PROTECTION ANGLE:

Conical surface Flux(90deg):

2594.6 lm
%lum = 71.2%
%lamp = 71.2%

Conical surface Flux(70deg):

3248.8 lm
%lum = 89.1%
%lamp = 89.1%

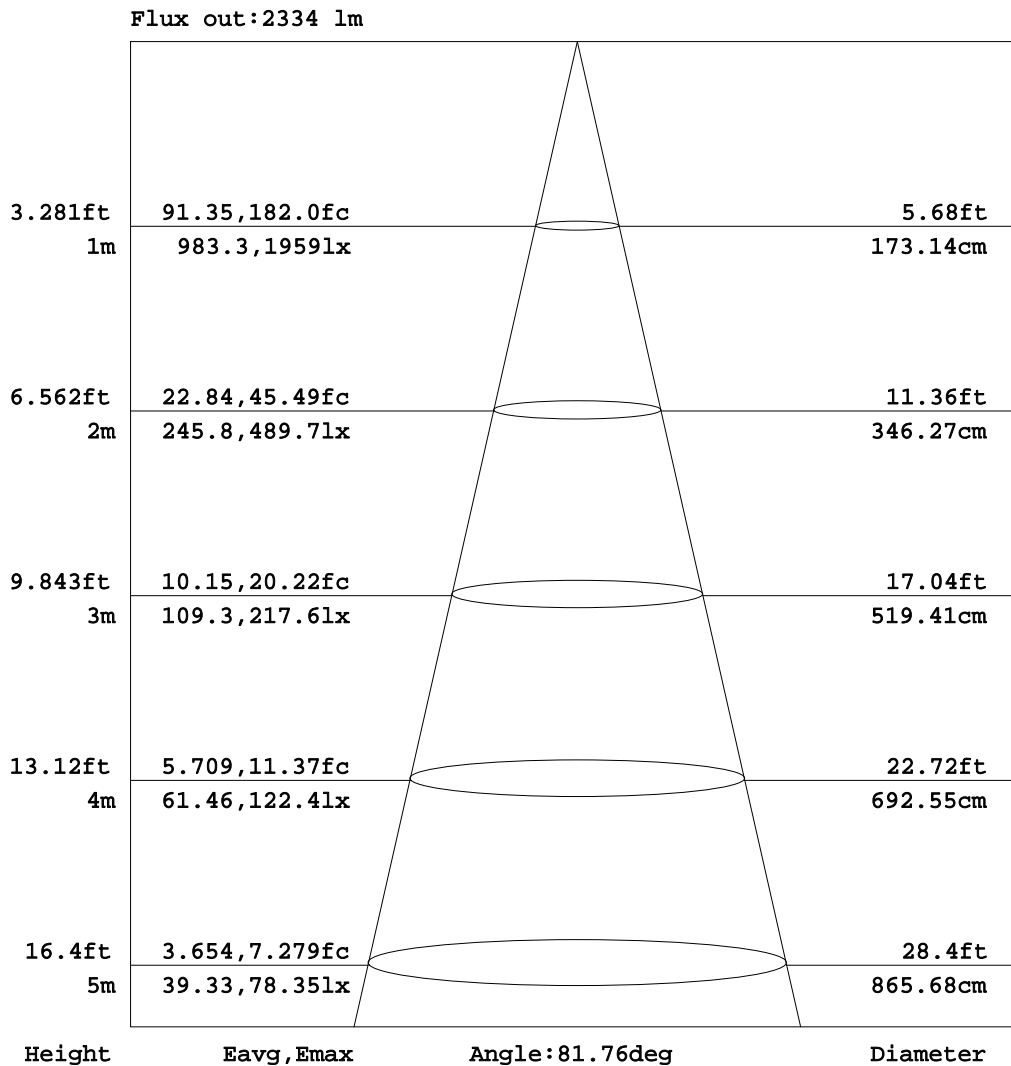


C Range: 0 - 360DEG
C Interval: 5.0DEG
Test Speed: HIGH
Temperature:25.3DEG
Operators:DAMIN
Test Date:2023-06-21

γ Range: 0 - 90DEG
γ Interval: 0.5DEG
Test System:EVERFINE GO-2000A_V1 SYSTEM V2.0.286
Humidity:65.0%
Test Distance:13.420m [K=1.0000]
Remarks: IL-PN195U(S) 4.000K 32W NW

AAI Figure

Test:U:230.0V I:0.1357A P:30.66W PF:0.9821 Lamp Flux:3646.2lx1 lm		
NAME: IL-PN195U(S) 4.000K	TYPE:	WEIGHT:
SPEC.:	DIM.:	SERIAL No.:
MFR.: EVERFINE	SUR.:250*1150	PROTECTION ANGLE:



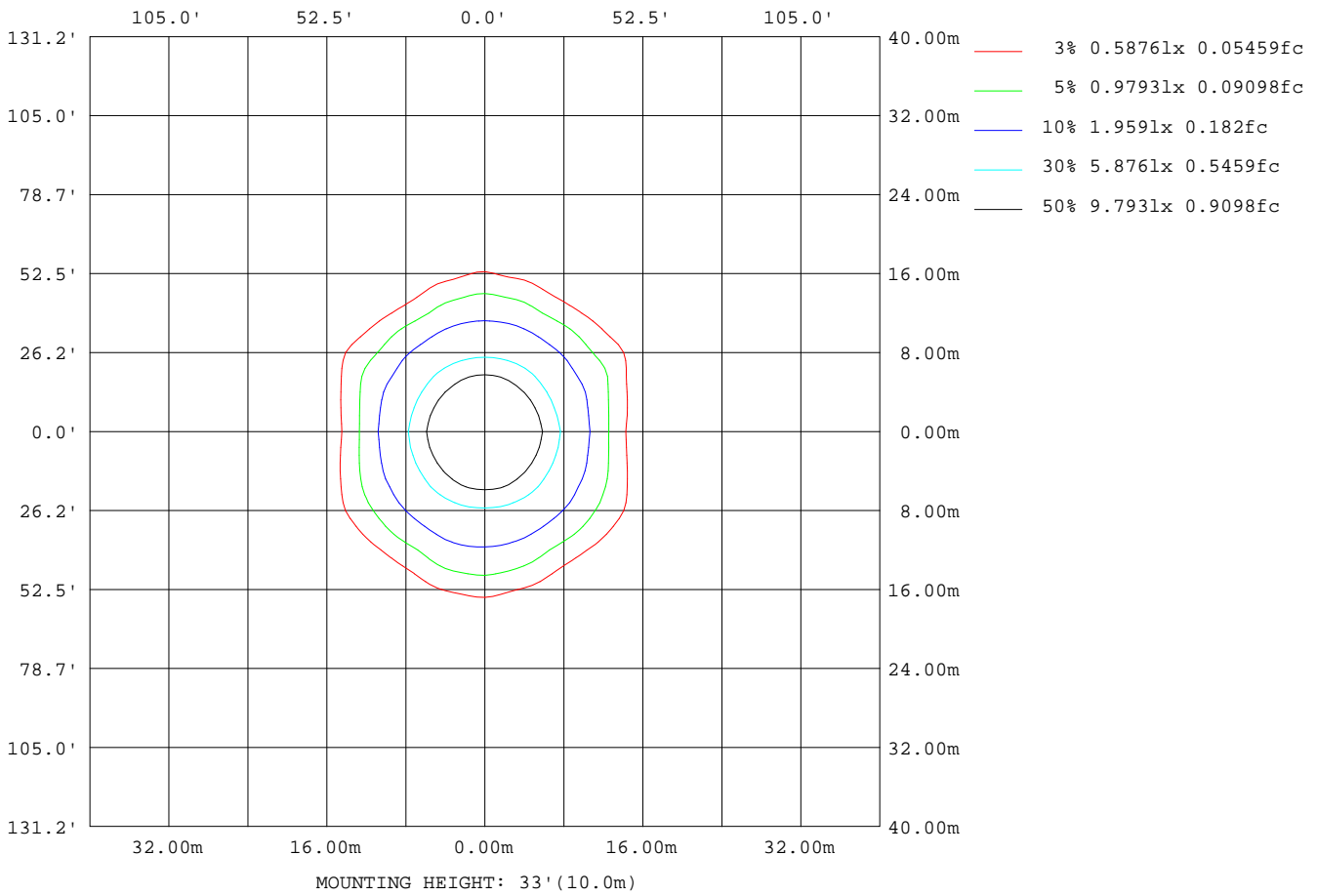
Note:The Curves indicate the illuminated area and the average illumination when the luminaire is at different distance.

C Range: 0 - 360DEG
 C Interval: 5.0DEG
 Test Speed: HIGH
 Temperature:25.3DEG
 Operators:DAMIN
 Test Date:2023-06-21

γ Range: 0 - 90DEG
 γ Interval: 0.5DEG
 Test System:EVERFINE GO-2000A_V1 SYSTEM V2.0.286
 Humidity:65.0%
 Test Distance:13.420m [K=1.0000]
 Remarks: IL-PN195U(S) 4.000K 32W NW

ISOLUX DIAGRAM

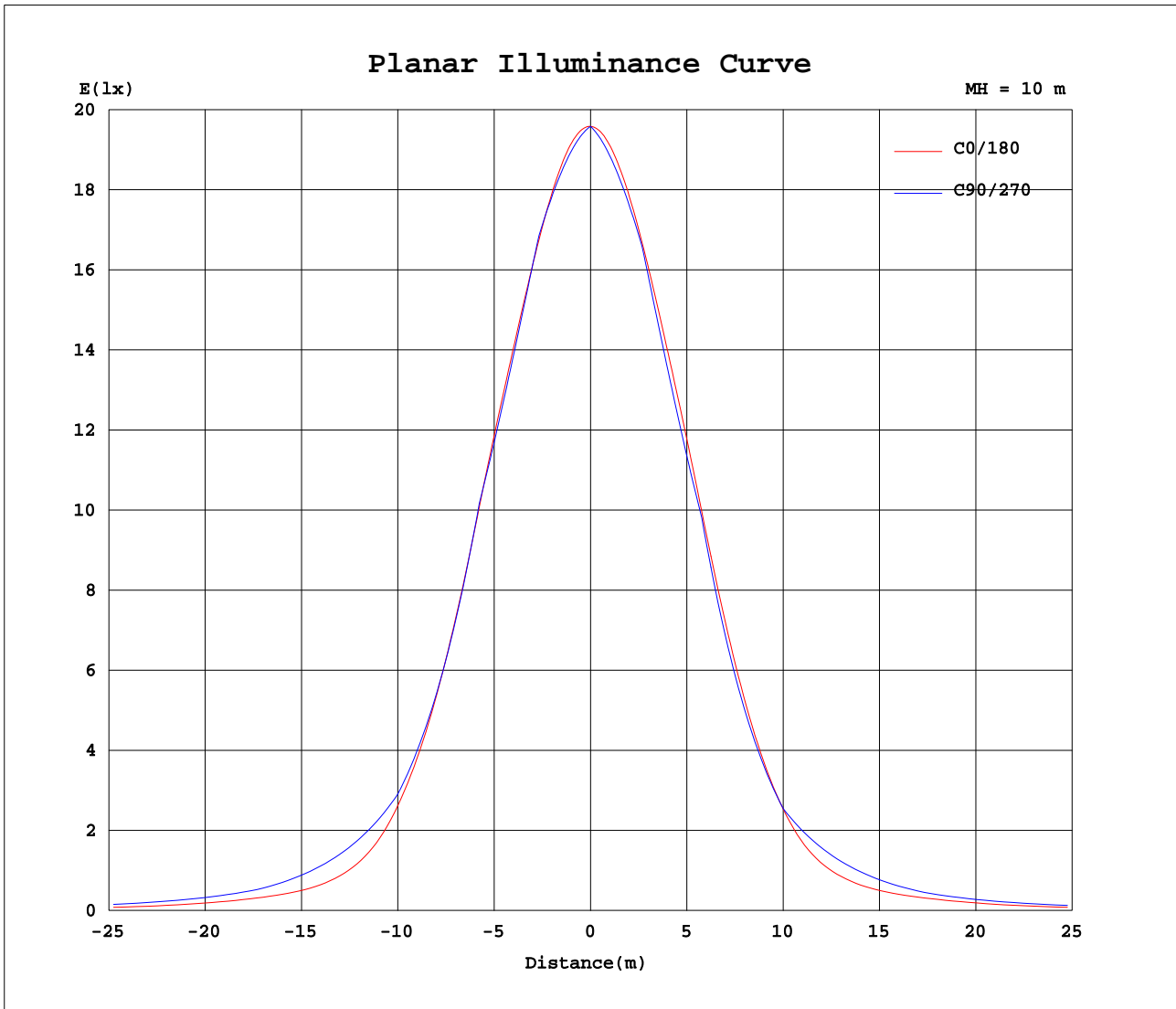
Test:U:230.0V I:0.1357A P:30.66W PF:0.9821 Lamp Flux:3646.2lx1 lm		
NAME: IL-PN195U(S) 4.000K	TYPE:	WEIGHT:
SPEC.:	DIM.:	SERIAL No.:
MFR.: EVERFINE	SUR.:250*1150	PROTECTION ANGLE:



C Range: 0 - 360DEG
 C Interval: 5.0DEG
 Test Speed: HIGH
 Temperature:25.3DEG
 Operators:DAMIN
 Test Date:2023-06-21

γ Range: 0 - 90DEG
 γ Interval: 0.5DEG
 Test System:EVERFINE GO-2000A_V1 SYSTEM V2.0.286
 Humidity:65.0%
 Test Distance:13.420m [K=1.0000]
 Remarks: IL-PN195U(S) 4.000K 32W NW

Planar Illuminance Curve



C Range: 0 - 360DEG
 C Interval: 5.0DEG
 Test Speed: HIGH
 Temperature: 25.3DEG
 Operators: DAMIN
 Test Date: 2023-06-21

γ Range: 0 - 90DEG
 γ Interval: 0.5DEG
 Test System: EVERFINE GO-2000A_V1 SYSTEM V2.0.286
 Humidity: 65.0%
 Test Distance: 13.420m [K=1.0000]
 Remarks: IL-PN195U(S) 4.000K 32W NW

LUMINOUS DISTRIBUTION INTENSITY DATA

Test:U:230.0V I:0.1357A P:30.66W PF:0.9821 Lamp Flux:3646.2lx1 lm		
NAME: IL-PN195U(S) 4.000K	TYPE:	WEIGHT:
SPEC.:	DIM.:	SERIAL No.:
MFR.: EVERFINE	SUR.:250*1150	PROTECTION ANGLE:

Table--1

UNIT: cd

C(DEG) γ (DEG)	0	5	10	15	20	25	30	35	40	45	50	55	60	65	70	75	80	85	90
0	1959	1959	1959	1959	1959	1959	1959	1959	1959	1959	1959	1959	1959	1959	1959	1959	1959	1959	1959
5	1948	1946	1943	1941	1939	1937	1936	1935	1934	1933	1932	1931	1931	1930	1930	1930	1929	1929	1929
10	1913	1908	1905	1902	1899	1898	1896	1896	1896	1896	1896	1897	1897	1898	1898	1899	1900	1900	1899
15	1858	1852	1847	1844	1842	1841	1842	1844	1846	1850	1853	1856	1860	1863	1865	1867	1869	1870	1870
20	1786	1777	1771	1768	1768	1770	1774	1779	1786	1794	1794	1786	1781	1777	1774	1771	1770	1769	1768
25	1694	1680	1671	1667	1669	1676	1687	1700	1684	1673	1668	1666	1665	1666	1667	1667	1667	1667	1666
30	1552	1529	1517	1515	1522	1537	1539	1525	1517	1516	1519	1528	1538	1548	1556	1561	1564	1565	1565
35	1327	1303	1294	1299	1315	1317	1306	1305	1311	1325	1344	1368	1363	1354	1344	1335	1326	1319	1317
40	1047	1027	1028	1047	1065	1050	1045	1054	1077	1098	1095	1091	1087	1084	1083	1082	1077	1071	1070
45	741	725	733	763	774	780	784	799	821	831	826	818	814	813	819	827	828	822	823
50	472	472	488	516	542	560	571	595	611	610	591	563	572	602	632	657	671	681	688
55	318	328	350	376	409	439	457	466	464	447	440	437	447	470	496	512	523	541	554
60	252	253	267	291	320	361	391	396	373	360	348	338	336	344	367	373	376	400	419
65	192	184	198	232	244	280	324	304	289	279	263	247	242	246	273	293	301	323	342
70	129	126	135	168	184	193	230	214	196	209	191	175	169	170	192	223	234	247	264
75	67.1	70.3	82.3	121	142	139	161	158	155	165	127	102	96.0	96.1	113	151	167	172	187
80	40.4	45.6	61.2	80.9	98.8	95.2	99.6	104	109	109	52.4	27.7	20.4	15.2	12.2	9.80	4.97	1.28	0.00
85	23.4	29.3	40.6	53.4	56.0	23.5	0.00	0.00	0.00	0.00	0.00	0.00	0.00	0.00	0.00	0.00	0.00	0.00	0.00
90	0.43	0.00	0.00	0.00	0.00	0.00	0.00	0.00	0.00	0.00	0.00	0.00	0.00	0.00	0.00	0.00	0.00	0.00	0.00

C Range: 0 - 360DEG
 C Interval: 5.0DEG
 Test Speed: HIGH
 Temperature:25.3DEG
 Operators:DAMIN
 Test Date:2023-06-21

γ Range: 0 - 90DEG
 γ Interval: 0.5DEG
 Test System:EVERFINE GO-2000A_V1 SYSTEM V2.0.286
 Humidity:65.0%
 Test Distance:13.420m [K=1.0000]
 Remarks: IL-PN195U(S) 4.000K 32W NW

LUMINOUS DISTRIBUTION INTENSITY DATA

Test:U:230.0V I:0.1357A P:30.66W PF:0.9821 Lamp Flux:3646.21x1 lm		
NAME: IL-PN195U(S) 4.000K	TYPE:	WEIGHT:
SPEC.:	DIM.:	SERIAL No.:
MFR.: EVERFINE	SUR.:250*1150	PROTECTION ANGLE:

Table--2

UNIT: cd

C(DEG) γ (DEG)	95	100	105	110	115	120	125	130	135	140	145	150	155	160	165	170	175	180	185	
0	1959	1959	1959	1959	1959	1959	1959	1959	1959	1959	1959	1959	1959	1959	1959	1959	1959	1959	1959	1959
5	1929	1929	1929	1929	1929	1929	1929	1930	1930	1931	1932	1933	1934	1935	1937	1939	1941	1943	1940	
10	1899	1898	1898	1897	1896	1895	1893	1893	1892	1891	1891	1891	1892	1894	1896	1899	1903	1907	1901	
15	1869	1868	1866	1864	1860	1857	1853	1849	1845	1842	1839	1837	1836	1836	1838	1840	1845	1851	1842	
20	1768	1768	1769	1771	1773	1777	1783	1790	1791	1782	1775	1768	1764	1761	1761	1764	1770	1778	1767	
25	1666	1665	1663	1662	1661	1661	1661	1662	1668	1679	1693	1677	1665	1658	1656	1659	1669	1683	1665	
30	1563	1560	1556	1550	1542	1532	1522	1514	1509	1508	1514	1528	1526	1511	1503	1503	1514	1534	1506	
35	1321	1328	1337	1344	1351	1358	1363	1338	1317	1303	1295	1296	1309	1306	1287	1280	1287	1309	1276	
40	1076	1086	1093	1094	1089	1087	1087	1090	1089	1064	1041	1034	1038	1052	1030	1009	1006	1025	997	
45	832	845	848	838	823	814	816	825	824	810	788	777	771	761	744	711	703	717	702	
50	690	689	680	651	610	572	569	596	607	602	591	575	562	538	509	482	463	458	459	
55	549	542	535	512	476	452	446	445	441	456	462	457	437	402	373	351	328	316	326	
60	406	394	395	379	353	346	345	350	358	365	382	379	348	312	286	266	254	254	253	
65	326	313	309	280	255	252	251	269	282	279	293	309	270	239	216	194	187	193	185	
70	247	239	233	195	175	174	177	198	211	188	209	220	196	182	161	136	126	128	122	
75	169	165	156	112	95.4	97.6	104	131	165	148	156	156	150	142	128	85.8	71.8	68.9	69.5	
80	1.25	4.89	10.1	11.9	14.9	20.6	28.5	53.9	108	103	103	101	100	106	92.4	66.6	53.3	44.3	47.2	
85	0.00	0.00	0.00	0.00	0.00	0.00	0.00	0.00	0.00	0.00	0.00	0.00	0.00	23.8	55.3	54.9	43.6	28.8	25.1	26.4
90	0.00	0.00	0.00	0.00	0.00	0.00	0.00	0.00	0.00	0.00	0.00	0.00	0.00	0.00	0.00	0.00	0.00	0.00	0.51	0.00

C Range: 0 - 360DEG
 C Interval: 5.0DEG
 Test Speed: HIGH
 Temperature:25.3DEG
 Operators:DAMIN
 Test Date:2023-06-21

γ Range: 0 - 90DEG
 γ Interval: 0.5DEG
 Test System:EVERFINE GO-2000A_V1 SYSTEM V2.0.286
 Humidity:65.0%
 Test Distance:13.420m [K=1.0000]
 Remarks: IL-PN195U(S) 4.000K 32W NW

LUMINOUS DISTRIBUTION INTENSITY DATA

Test:U:230.0V I:0.1357A P:30.66W PF:0.9821 Lamp Flux:3646.21x1 lm		
NAME: IL-PN195U(S) 4.000K	TYPE:	WEIGHT:
SPEC.:	DIM.:	SERIAL No.:
MFR.: EVERFINE	SUR.:250*1150	PROTECTION ANGLE:

Table--3

UNIT: cd

C(DEG) γ (DEG)	190	195	200	205	210	215	220	225	230	235	240	245	250	255	260	265	270	275	280
0	1959	1959	1959	1959	1959	1959	1959	1959	1959	1959	1959	1959	1959	1959	1959	1959	1959	1959	1959
5	1937	1934	1932	1930	1928	1926	1925	1923	1922	1921	1920	1920	1919	1919	1919	1919	1919	1919	1920
10	1895	1891	1887	1884	1881	1879	1878	1877	1877	1877	1877	1877	1878	1878	1879	1879	1880	1880	1880
15	1835	1830	1826	1824	1822	1822	1822	1824	1826	1828	1830	1833	1835	1837	1838	1840	1840	1840	1840
20	1758	1752	1749	1748	1750	1753	1757	1763	1759	1749	1742	1737	1734	1732	1730	1730	1730	1731	1732
25	1653	1646	1645	1650	1658	1668	1647	1631	1621	1615	1613	1614	1615	1617	1619	1620	1621	1621	1621
30	1489	1483	1487	1501	1499	1479	1466	1458	1458	1463	1471	1481	1491	1500	1506	1509	1511	1511	1508
35	1258	1254	1264	1262	1246	1240	1241	1249	1265	1287	1282	1273	1266	1259	1252	1248	1247	1250	1257
40	988	997	1004	986	977	978	990	1006	1008	1006	1002	998	995	991	987	984	984	987	994
45	709	734	740	736	728	727	746	754	748	736	727	724	724	724	723	720	720	724	731
50	475	505	539	557	550	546	550	552	532	495	490	517	547	566	580	594	602	596	587
55	346	366	399	441	452	433	410	395	392	382	381	396	425	441	448	470	483	469	455
60	266	289	309	342	378	367	336	316	297	287	283	284	307	320	318	345	364	342	324
65	202	236	233	250	299	290	279	264	218	194	198	200	225	249	254	275	289	271	258
70	136	177	184	172	207	204	192	213	167	138	136	139	159	188	196	208	215	203	198
75	82.4	130	146	135	146	148	138	155	115	84.1	75.8	77.7	95.8	125	138	141	140	136	137
80	63.7	78.2	90.5	87.2	88.3	88.1	89.2	89.2	46.0	24.4	16.0	12.2	10.4	8.12	4.08	1.05	0.00	1.01	4.06
85	34.2	44.3	45.7	19.0	0.00	0.00	0.00	0.00	0.00	0.00	0.00	0.00	0.00	0.00	0.00	0.00	0.00	0.00	0.00
90	0.00	0.00	0.00	0.00	0.00	0.00	0.00	0.00	0.00	0.00	0.00	0.00	0.00	0.00	0.00	0.00	0.00	0.00	0.00

C Range: 0 - 360DEG
 C Interval: 5.0DEG
 Test Speed: HIGH
 Temperature:25.3DEG
 Operators:DAMIN
 Test Date:2023-06-21

γ Range: 0 - 90DEG
 γ Interval: 0.5DEG
 Test System:EVERFINE GO-2000A_V1 SYSTEM V2.0.286
 Humidity:65.0%
 Test Distance:13.420m [K=1.0000]
 Remarks: IL-PN195U(S) 4.000K 32W NW

LUMINOUS DISTRIBUTION INTENSITY DATA

Test:U:230.0V I:0.1357A P:30.66W PF:0.9821 Lamp Flux:3646.21x1 lm		
NAME: IL-PN195U(S) 4.000K	TYPE:	WEIGHT:
SPEC.:	DIM.:	SERIAL No.:
MFR.: EVERFINE	SUR.:250*1150	PROTECTION ANGLE:

Table--4

UNIT: cd

C(DEG) γ (DEG)	285	290	295	300	305	310	315	320	325	330	335	340	345	350	355				
0	1959	1959	1959	1959	1959	1959	1959	1959	1959	1959	1959	1959	1959	1959	1959				
5	1920	1921	1921	1922	1923	1924	1926	1927	1929	1931	1933	1936	1939	1942	1945				
10	1880	1880	1880	1881	1881	1881	1882	1883	1885	1887	1889	1892	1896	1901	1907				
15	1839	1838	1836	1834	1832	1830	1828	1827	1827	1827	1829	1832	1836	1842	1849				
20	1734	1737	1741	1746	1753	1763	1766	1761	1757	1754	1753	1754	1758	1764	1774				
25	1621	1620	1619	1620	1622	1627	1636	1651	1672	1662	1655	1652	1654	1661	1675				
30	1504	1498	1489	1480	1471	1466	1465	1471	1484	1504	1506	1492	1490	1499	1520				
35	1265	1275	1285	1294	1298	1273	1256	1246	1244	1248	1258	1258	1253	1263	1288				
40	1001	1007	1013	1018	1020	1018	1012	997	986	983	988	1006	1005	1004	1016				
45	736	739	744	749	755	763	768	763	747	745	753	759	757	732	725				
50	580	564	539	517	521	553	572	571	565	567	576	556	518	487	472				
55	455	441	418	406	406	414	418	428	443	464	459	409	374	356	332				
60	335	320	304	306	310	320	333	344	369	385	346	306	290	274	256				
65	259	233	217	219	217	237	276	288	295	304	255	234	245	207	185				
70	191	163	149	149	153	179	224	205	207	217	179	177	182	145	121				
75	123	95.1	81.1	82.0	90.6	123	166	146	152	159	146	146	133	86.7	67.2				
80	7.90	10.2	12.5	17.0	25.4	49.7	96.8	94.2	93.5	95.9	95.4	94.2	80.3	61.5	43.8				
85	0.00	0.00	0.00	0.00	0.00	0.00	0.00	0.00	0.00	0.00	19.6	45.2	45.1	37.3	28.5				
90	0.00	0.00	0.00	0.00	0.00	0.00	0.00	0.00	0.00	0.00	0.00	0.00	0.00	0.00	0.00				

C Range: 0 - 360DEG
 C Interval: 5.0DEG
 Test Speed: HIGH
 Temperature:25.3DEG
 Operators:DAMIN
 Test Date:2023-06-21

γ Range: 0 - 90DEG
 γ Interval: 0.5DEG
 Test System:EVERFINE GO-2000A_V1 SYSTEM V2.0.286
 Humidity:65.0%
 Test Distance:13.420m [K=1.0000]
 Remarks: IL-PN195U(S) 4.000K 32W NW

Photometric Data Table [cd]

G/C	0.0	5.0	10.0	15.0	20.0	25.0	30.0	35.0	40.0	45.0
0.0	1959	1959	1959	1959	1959	1959	1959	1959	1959	1959
2.5	1956	1955	1954	1953	1952	1951	1950	1949	1948	1947
5.0	1948	1946	1943	1941	1939	1937	1936	1935	1934	1933
7.5	1934	1930	1927	1924	1922	1920	1918	1917	1916	1916
10.0	1913	1908	1905	1902	1899	1898	1896	1896	1896	1896
12.5	1888	1882	1878	1875	1873	1872	1871	1871	1872	1874
15.0	1858	1852	1847	1844	1842	1841	1842	1844	1846	1850
17.5	1824	1817	1812	1808	1807	1807	1810	1813	1818	1823
20.0	1786	1777	1771	1768	1768	1770	1774	1779	1786	1794
22.5	1743	1732	1725	1722	1723	1727	1733	1742	1752	1761
25.0	1694	1680	1671	1667	1669	1676	1687	1700	1720	1743
27.5	1633	1614	1603	1599	1603	1614	1630	1659	1698	1748
30.0	1552	1529	1517	1515	1522	1537	1539	1525	1517	1516
32.5	1445	1422	1411	1412	1423	1444	1428	1420	1419	1424
35.0	1327	1303	1294	1299	1315	1317	1306	1305	1311	1325
37.5	1193	1171	1167	1178	1201	1185	1177	1182	1197	1218
40.0	1047	1027	1028	1027	1065	1050	1045	1054	1077	1098
42.5	895.9	876.4	880.4	906.5	917.8	912.2	913.8	925.3	949.7	959.4
45.0	741.4	725.3	733.2	763.1	774.0	779.6	784.1	798.7	820.7	831.0
47.5	593.8	585.1	597.8	626.1	645.1	659.0	666.4	686.9	707.7	713.6
50.0	472.4	472.1	487.7	515.6	542.3	559.9	570.9	594.7	611.1	609.9
52.5	382.9	389.1	408.8	435.5	466.5	488.1	505.0	522.2	530.0	520.1
55.0	318.5	328.1	349.9	375.5	409.1	439.0	456.9	466.4	464.4	446.6
57.5	279.1	285.2	303.4	327.4	360.3	398.8	420.2	426.2	413.6	402.3
60.0	251.7	252.8	266.8	291.3	320.2	360.6	390.6	396.1	373.3	360.0
62.5	223.1	219.2	233.1	262.2	283.1	322.4	366.4	351.3	332.5	319.1
65.0	191.8	184.0	198.1	232.4	244.4	280.3	324.2	303.6	288.9	279.1
67.5	160.1	153.1	165.1	196.8	208.9	233.4	274.0	257.6	241.7	238.9
70.0	128.9	125.9	135.3	167.7	184.4	193.5	230.2	214.0	196.3	209.1
72.5	93.89	96.94	105.4	144.4	166.0	164.1	194.4	180.4	175.8	184.9
75.0	67.12	70.31	82.27	121.3	142.0	139.3	161.4	158.1	155.1	164.6
77.5	50.41	53.98	68.59	97.06	118.8	115.4	128.1	132.6	133.0	146.8
80.0	40.37	45.57	61.19	80.91	98.84	95.20	99.56	104.2	109.2	109.0
82.5	33.13	40.95	51.69	67.18	79.76	76.98	72.21	51.69	32.78	15.02
85.0	23.36	29.32	40.62	53.39	56.01	23.48	0	0	0	0
87.5	4.865	12.90	23.06	0	0	0	0	0	0	0
90.0	0.4273	0	0	0	0	0	0	0	0	0
G/C	50.0	55.0	60.0	65.0	70.0	75.0	80.0	85.0	90.0	95.0
0.0	1959	1959	1959	1959	1959	1959	1959	1959	1959	1959
2.5	1947	1946	1946	1945	1945	1944	1944	1944	1944	1944
5.0	1932	1931	1931	1930	1930	1930	1929	1929	1929	1929
7.5	1915	1915	1915	1915	1915	1915	1915	1914	1914	1914
10.0	1896	1897	1897	1898	1898	1899	1900	1900	1899	1899
12.5	1875	1877	1879	1881	1882	1883	1884	1885	1885	1884
15.0	1853	1856	1860	1863	1865	1867	1869	1870	1870	1869
17.5	1829	1834	1835	1830	1826	1823	1821	1820	1819	1819
20.0	1794	1786	1781	1777	1774	1771	1770	1769	1768	1768
22.5	1733	1728	1725	1722	1721	1720	1719	1718	1717	1717
25.0	1668	1666	1665	1666	1667	1667	1667	1667	1666	1666
27.5	1597	1599	1603	1608	1612	1615	1616	1616	1616	1615
30.0	1519	1528	1538	1548	1556	1561	1564	1565	1565	1563
32.5	1436	1451	1469	1486	1473	1461	1451	1444	1441	1443
35.0	1344	1368	1363	1354	1344	1335	1326	1319	1317	1321
37.5	1238	1232	1225	1220	1215	1209	1202	1195	1194	1198
40.0	1095	1091	1087	1084	1083	1082	1077	1071	1070	1076
42.5	957.0	953.1	949.5	948.3	951.3	954.8	952.4	946.4	946.4	954.3
45.0	825.8	817.9	813.9	812.9	818.6	826.7	827.6	822.1	822.7	832.5
47.5	703.4	687.4	680.2	678.2	702.7	730.8	744.9	750.5	755.5	760.3
50.0	591.1	563.5	571.7	601.7	631.9	656.6	671.1	680.9	688.3	690.0
52.5	489.7	490.3	507.3	534.8	563.3	583.7	597.2	611.1	621.1	619.4
55.0	439.8	437.1	446.5	469.6	496.5	512.1	523.3	541.0	553.9	548.5
57.5	392.8	386.7	389.3	405.9	431.3	441.8	449.6	470.6	486.7	477.4
60.0	347.8	338.2	335.5	344.2	367.3	372.8	376.1	400.0	419.5	406.0
62.5	304.6	291.2	284.2	285.1	313.1	327.2	335.5	360.5	380.6	365.3
65.0	263.1	247.0	242.4	246.3	272.9	292.8	301.2	322.6	341.8	325.9
67.5	225.4	210.8	205.5	207.9	232.4	258.0	267.3	284.8	303.0	286.6
70.0	191.1	174.6	168.8	170.3	192.3	222.8	233.7	247.1	264.2	247.3
72.5	158.1	138.3	132.3	133.1	152.5	187.1	200.4	209.7	225.4	208.1
75.0	126.7	102.1	96.00	96.14	113.2	151.2	167.3	172.4	186.5	168.9
77.5	96.63	65.83	59.16	56.95	64.62	83.72	88.35	87.27	93.26	85.47
80.0	52.44	27.69	20.37	15.24	12.22	9.800	4.970	1.281	0	1.255
82.5	0	0	0	0	0	0	0	0	0	0
85.0	0	0	0	0	0	0	0	0	0	0

C Range: 0 - 360DEG
 C Interval: 5.0DEG
 Test Speed: HIGH
 Temperature: 25.3DEG
 Operators: DAMIN
 Test Date: 2023-06-21

γ Range: 0 - 90DEG
 γ Interval: 0.5DEG
 Test System: EVERFINE GO-2000A_V1 SYSTEM V2.0.286
 Humidity: 65.0%
 Test Distance: 13.420m [K=1.0000]
 Remarks: IL-PN195U(S) 4.000K 32W NW

Photometric Data Table [cd]

87.5	0	0	0	0	0	0	0	0	0	0
90.0	0	0	0	0	0	0	0	0	0	0
G/C	100.0	105.0	110.0	115.0	120.0	125.0	130.0	135.0	140.0	145.0
0.0	1959	1959	1959	1959	1959	1959	1959	1959	1959	1959
2.5	1944	1944	1944	1944	1944	1945	1945	1946	1946	1947
5.0	1929	1929	1929	1929	1929	1929	1930	1930	1931	1932
7.5	1914	1913	1913	1913	1912	1912	1912	1912	1912	1913
10.0	1898	1898	1897	1896	1895	1893	1893	1892	1891	1891
12.5	1883	1882	1880	1878	1876	1874	1871	1869	1868	1867
15.0	1868	1866	1864	1860	1857	1853	1849	1845	1842	1839
17.5	1820	1821	1824	1827	1832	1831	1825	1819	1814	1809
20.0	1768	1769	1771	1773	1777	1783	1790	1791	1782	1775
22.5	1717	1716	1717	1718	1720	1724	1729	1737	1748	1737
25.0	1665	1663	1662	1661	1661	1661	1662	1668	1679	1693
27.5	1612	1610	1607	1603	1598	1593	1591	1593	1598	1609
30.0	1560	1556	1550	1542	1532	1522	1514	1509	1508	1514
32.5	1449	1458	1468	1479	1462	1445	1429	1417	1409	1410
35.0	1328	1337	1344	1351	1358	1363	1338	1317	1303	1295
37.5	1207	1215	1220	1221	1223	1227	1232	1211	1187	1171
40.0	1086	1093	1094	1089	1087	1087	1090	1089	1064	1041
42.5	965.7	971.0	967.2	956.5	949.9	949.3	953.9	951.5	935.3	912.7
45.0	845.3	848.0	838.0	822.9	813.6	815.7	825.0	824.4	809.7	787.6
47.5	763.3	754.2	724.0	689.0	679.3	688.4	705.4	709.3	698.6	679.3
50.0	689.5	680.0	651.3	610.2	571.6	568.7	596.2	606.8	602.4	590.6
52.5	615.7	607.1	580.7	541.6	509.9	498.6	497.5	516.6	521.8	519.1
55.0	541.7	535.3	511.8	475.7	452.2	446.1	444.8	441.4	456.0	462.0
57.5	468.0	464.6	444.5	412.8	397.8	395.1	395.3	397.5	403.9	417.6
60.0	394.5	394.9	378.7	353.1	346.0	345.1	349.5	357.9	365.2	382.1
62.5	351.0	346.6	322.6	296.4	296.5	296.5	307.7	320.1	324.2	338.4
65.0	313.3	309.0	279.8	255.3	252.1	250.7	269.3	282.1	279.4	293.4
67.5	275.8	271.1	237.2	214.5	212.5	213.6	233.5	242.4	231.9	249.6
70.0	238.6	233.0	194.9	174.5	173.6	177.1	198.4	210.7	187.8	209.0
72.5	201.5	194.6	152.8	134.8	135.4	140.7	163.9	185.4	167.8	177.8
75.0	164.6	156.0	111.5	95.36	97.62	104.4	130.8	164.9	147.5	155.7
77.5	86.81	86.24	62.98	55.42	59.80	67.76	99.33	146.8	126.1	130.4
80.0	4.886	10.09	11.89	14.85	20.62	28.53	53.94	108.5	103.3	103.0
82.5	0	0	0	0	0	0	0	14.74	31.37	51.57
85.0	0	0	0	0	0	0	0	0	0	0
87.5	0	0	0	0	0	0	0	0	0	0
90.0	0	0	0	0	0	0	0	0	0	0
G/C	150.0	155.0	160.0	165.0	170.0	175.0	180.0	185.0	190.0	195.0
0.0	1959	1959	1959	1959	1959	1959	1959	1959	1959	1959
2.5	1948	1949	1950	1951	1952	1953	1954	1952	1951	1949
5.0	1933	1934	1935	1937	1939	1941	1943	1940	1937	1934
7.5	1914	1915	1917	1919	1921	1924	1928	1923	1919	1915
10.0	1891	1892	1894	1896	1899	1903	1907	1901	1895	1891
12.5	1866	1866	1867	1869	1872	1876	1881	1874	1868	1862
15.0	1837	1836	1836	1838	1840	1845	1851	1842	1835	1830
17.5	1805	1802	1801	1802	1805	1810	1817	1807	1799	1794
20.0	1768	1764	1761	1761	1764	1770	1778	1767	1758	1752
22.5	1727	1719	1714	1713	1716	1723	1734	1720	1710	1704
25.0	1677	1665	1658	1656	1659	1669	1683	1665	1653	1646
27.5	1618	1602	1591	1588	1591	1601	1619	1596	1581	1574
30.0	1528	1526	1511	1503	1503	1514	1534	1506	1489	1483
32.5	1418	1435	1414	1401	1398	1408	1430	1398	1379	1373
35.0	1296	1309	1306	1287	1280	1287	1309	1276	1258	1254
37.5	1166	1175	1190	1164	1151	1153	1173	1141	1127	1127
40.0	1034	1038	1052	1030	1009	1006	1025	996.9	988.4	996.7
42.5	902.8	901.8	902.9	887.5	859.6	853.4	870.8	848.6	847.7	863.9
45.0	777.2	771.3	761.5	743.7	711.2	703.0	717.2	702.2	708.6	733.6
47.5	665.2	656.2	635.2	611.4	582.8	568.4	573.6	566.8	580.8	609.7
50.0	575.1	562.3	537.9	509.4	481.8	462.5	457.8	458.7	475.2	505.4
52.5	508.9	492.7	462.7	432.9	408.6	385.4	376.2	381.4	399.7	425.2
55.0	456.6	436.5	402.2	373.2	351.5	327.5	316.2	325.5	346.0	366.3
57.5	413.8	388.3	351.9	324.6	305.1	285.8	279.0	284.4	302.0	321.3
60.0	379.4	348.1	311.7	286.5	266.1	253.8	253.6	252.6	265.5	288.7
62.5	351.4	308.7	275.4	251.8	229.6	221.2	226.7	220.3	233.2	262.5
65.0	309.3	269.8	238.6	215.7	193.8	186.6	193.4	185.3	201.6	236.4
67.5	261.2	230.4	205.9	183.3	163.5	155.5	160.8	152.4	169.3	205.3
70.0	219.6	196.5	182.3	161.1	135.8	125.9	128.4	122.3	136.2	177.0
72.5	185.7	171.6	162.9	144.1	106.5	95.83	94.65	92.91	104.5	152.4
75.0	156.3	149.7	142.3	128.0	85.84	71.85	68.93	69.48	82.44	130.5
77.5	127.9	124.7	124.5	107.6	74.24	58.42	52.53	54.72	70.43	100.3

C Range: 0 - 360DEG
 C Interval: 5.0DEG
 Test Speed: HIGH
 Temperature: 25.3DEG
 Operators: DAMIN
 Test Date: 2023-06-21

γ Range: 0 - 90DEG
 γ Interval: 0.5DEG
 Test System: EVERFINE GO-2000A_V1 SYSTEM V2.0.286
 Humidity: 65.0%
 Test Distance: 13.420m [K=1.0000]
 Remarks: IL-PN195U(S) 4.000K 32W NW

Photometric Data Table [cd]

80.0	101.2	100.1	106.1	92.35	66.57	53.28	44.30	47.24	63.75	78.23
82.5	72.97	78.81	83.72	75.70	56.29	44.93	37.38	39.26	49.57	61.45
85.0	0	23.81	55.27	54.93	43.55	28.78	25.14	26.41	34.18	44.33
87.5	0	0	0	0	24.25	13.60	6.161	9.480	17.94	0
90.0	0	0	0	0	0	0	0.5072	0	0	0
G/C	200.0	205.0	210.0	215.0	220.0	225.0	230.0	235.0	240.0	245.0
0.0	1959	1959	1959	1959	1959	1959	1959	1959	1959	1959
2.5	1948	1946	1945	1944	1943	1942	1941	1941	1940	1940
5.0	1932	1930	1928	1926	1925	1923	1922	1921	1920	1920
7.5	1912	1909	1906	1904	1903	1901	1900	1900	1899	1899
10.0	1887	1884	1881	1879	1878	1877	1877	1877	1877	1877
12.5	1858	1855	1853	1852	1852	1852	1852	1853	1854	1855
15.0	1826	1824	1822	1822	1822	1824	1826	1828	1830	1833
17.5	1790	1788	1788	1789	1791	1794	1798	1802	1802	1795
20.0	1749	1748	1750	1753	1757	1763	1759	1749	1742	1737
22.5	1702	1703	1707	1713	1721	1705	1693	1684	1679	1677
25.0	1645	1650	1658	1668	1647	1631	1621	1615	1613	1614
27.5	1575	1583	1597	1581	1562	1549	1543	1542	1544	1549
30.0	1487	1501	1499	1479	1466	1458	1458	1463	1471	1481
32.5	1380	1399	1378	1365	1358	1359	1365	1378	1394	1410
35.0	1264	1262	1246	1240	1241	1249	1265	1287	1282	1273
37.5	1142	1123	1111	1109	1117	1133	1151	1147	1142	1136
40.0	1004	985.8	976.8	978.3	989.6	1006	1008	1006	1002	998.4
42.5	866.4	854.8	847.1	849.9	863.2	873.6	873.2	868.0	863.6	860.8
45.0	740.3	735.7	727.9	727.0	745.6	753.6	747.9	735.8	727.4	724.0
47.5	629.7	636.0	626.4	626.5	640.7	647.0	634.3	611.0	594.6	588.6
50.0	538.8	557.3	549.9	545.7	549.9	551.6	532.3	495.1	490.4	517.1
52.5	462.9	496.3	495.8	481.7	473.3	466.8	441.1	429.6	434.0	455.9
55.0	399.3	441.2	451.8	432.5	410.2	394.9	391.6	382.0	381.0	396.3
57.5	348.4	387.5	413.5	395.4	361.2	351.4	342.9	334.5	330.7	338.7
60.0	308.7	342.2	378.0	367.2	336.1	315.9	296.9	286.5	282.6	283.6
62.5	272.5	296.3	345.5	333.1	310.6	287.4	254.9	238.7	235.5	231.3
65.0	233.4	249.8	298.7	289.7	278.5	264.1	218.2	193.7	198.3	200.4
67.5	199.8	202.6	248.8	244.6	237.6	241.9	191.0	165.0	166.9	169.5
70.0	183.9	171.9	207.2	203.9	191.9	212.9	167.4	137.6	136.0	138.9
72.5	172.3	152.7	174.7	173.0	163.1	183.0	142.1	110.7	105.6	108.3
75.0	146.1	134.9	145.8	147.6	137.9	154.8	115.1	84.06	75.76	77.71
77.5	116.2	111.0	115.8	118.7	113.7	128.3	86.61	57.27	46.21	45.62
80.0	90.47	87.16	88.35	88.07	89.18	89.24	46.04	24.36	15.95	12.17
82.5	69.56	65.16	60.57	42.14	26.88	12.23	0	0	0	0
85.0	45.71	19.05	0	0	0	0	0	0	0	0
87.5	0	0	0	0	0	0	0	0	0	0
90.0	0	0	0	0	0	0	0	0	0	0
G/C	250.0	255.0	260.0	265.0	270.0	275.0	280.0	285.0	290.0	295.0
0.0	1959	1959	1959	1959	1959	1959	1959	1959	1959	1959
2.5	1939	1939	1939	1939	1939	1939	1939	1940	1940	1941
5.0	1919	1919	1919	1919	1919	1919	1920	1920	1921	1921
7.5	1899	1899	1899	1899	1899	1900	1900	1900	1901	1901
10.0	1878	1878	1879	1879	1880	1880	1880	1880	1880	1880
12.5	1857	1857	1858	1860	1860	1860	1860	1860	1859	1859
15.0	1835	1837	1838	1840	1840	1840	1840	1839	1838	1836
17.5	1791	1788	1786	1785	1785	1786	1788	1790	1795	1799
20.0	1734	1732	1730	1730	1730	1731	1732	1734	1737	1741
22.5	1675	1675	1675	1675	1676	1676	1677	1678	1679	1681
25.0	1615	1617	1619	1620	1621	1621	1621	1621	1620	1619
27.5	1554	1559	1562	1565	1566	1566	1565	1563	1560	1555
30.0	1491	1500	1506	1509	1511	1511	1508	1504	1498	1489
32.5	1401	1392	1385	1380	1379	1382	1388	1398	1408	1420
35.0	1266	1259	1252	1248	1247	1250	1257	1265	1275	1285
37.5	1130	1125	1120	1116	1116	1119	1126	1133	1141	1149
40.0	994.8	991.3	987.5	984.1	983.8	987.3	994.1	1001	1007	1013
42.5	859.5	857.6	855.1	852.0	852.0	855.8	862.7	868.3	873.0	877.8
45.0	724.3	723.6	722.7	719.9	720.2	724.4	731.4	735.7	739.4	743.8
47.5	609.7	631.0	645.4	655.5	660.8	658.9	653.6	643.9	626.3	611.2
50.0	547.2	566.5	579.7	594.0	601.5	596.0	587.2	579.8	563.8	539.5
52.5	485.8	503.2	514.0	532.2	542.2	532.9	521.0	517.1	501.8	477.6
55.0	425.4	441.0	448.5	470.2	482.8	469.4	455.1	455.3	440.6	417.6
57.5	365.9	379.9	383.2	407.9	423.5	405.7	389.6	394.4	379.9	359.5
60.0	307.3	320.0	318.1	345.4	364.1	341.8	324.5	334.5	319.8	303.8
62.5	258.5	279.7	283.0	309.7	326.8	305.9	288.8	292.2	269.3	251.1
65.0	224.8	249.2	253.6	275.4	289.4	271.4	258.4	258.7	233.3	217.2
67.5	191.7	218.5	224.6	241.3	252.1	237.3	228.2	224.9	198.1	183.1
70.0	159.1	187.6	195.6	207.6	214.7	203.4	197.9	191.0	163.3	149.2

C Range: 0 - 360DEG
 C Interval: 5.0DEG
 Test Speed: HIGH
 Temperature: 25.3DEG
 Operators: DAMIN
 Test Date: 2023-06-21

γ Range: 0 - 90DEG
 γ Interval: 0.5DEG
 Test System: EVERFINE GO-2000A_V1 SYSTEM V2.0.286
 Humidity: 65.0%
 Test Distance: 13.420m [K=1.0000]
 Remarks: IL-PN195U(S) 4.000K 32W NW

Photometric Data Table [cd]

72.5	127.2	156.4	166.7	174.1	177.4	169.7	167.5	156.8	129.0	115.2
75.0	95.82	125.2	137.9	140.9	140.0	136.1	137.2	122.7	95.12	81.09
77.5	55.10	69.29	72.68	71.36	70.02	68.94	72.24	67.45	54.12	46.77
80.0	10.41	8.122	4.083	1.049	0	1.013	4.061	7.900	10.24	12.51
82.5	0	0	0	0	0	0	0	0	0	0
85.0	0	0	0	0	0	0	0	0	0	0
87.5	0	0	0	0	0	0	0	0	0	0
90.0	0	0	0	0	0	0	0	0	0	0
G/C	300.0	305.0	310.0	315.0	320.0	325.0	330.0	335.0	340.0	345.0
0.0	1959	1959	1959	1959	1959	1959	1959	1959	1959	1959
2.5	1941	1942	1943	1944	1945	1946	1947	1949	1950	1951
5.0	1922	1923	1924	1926	1927	1929	1931	1933	1936	1939
7.5	1902	1903	1904	1905	1907	1909	1911	1914	1917	1920
10.0	1881	1881	1881	1882	1883	1885	1887	1889	1892	1896
12.5	1858	1857	1857	1856	1856	1857	1859	1861	1864	1868
15.0	1834	1832	1830	1828	1827	1827	1827	1829	1832	1836
17.5	1805	1806	1802	1799	1796	1793	1793	1793	1795	1800
20.0	1746	1753	1763	1766	1761	1757	1754	1753	1754	1758
22.5	1684	1690	1697	1709	1724	1716	1711	1708	1708	1711
25.0	1620	1622	1627	1636	1651	1672	1662	1655	1652	1654
27.5	1552	1549	1550	1555	1567	1585	1602	1589	1582	1582
30.0	1480	1471	1466	1465	1471	1484	1504	1506	1492	1490
32.5	1404	1388	1374	1365	1364	1369	1381	1399	1381	1376
35.0	1294	1298	1273	1256	1246	1244	1248	1258	1258	1253
37.5	1155	1160	1159	1138	1122	1114	1112	1120	1135	1129
40.0	1018	1020	1018	1012	997.0	985.9	982.6	988.2	1006	1005
42.5	882.4	884.7	885.6	883.8	875.5	864.1	858.2	865.1	879.4	881.5
45.0	749.2	755.3	763.5	768.1	763.0	747.0	745.2	752.8	759.4	756.5
47.5	619.4	633.1	652.7	664.3	661.6	648.2	645.9	654.2	650.3	626.5
50.0	516.9	520.5	553.1	572.1	571.0	565.5	566.9	575.6	556.0	517.8
52.5	459.6	455.2	463.5	489.4	494.0	497.1	509.9	515.5	478.1	435.8
55.0	405.8	406.2	413.8	417.5	427.6	442.5	464.2	458.7	409.3	374.1
57.5	354.7	358.0	365.8	372.0	373.2	401.2	423.7	398.3	350.9	325.4
60.0	305.8	310.0	319.5	333.3	344.3	369.2	385.4	346.2	305.6	290.2
62.5	258.0	262.4	276.3	301.8	318.0	336.9	350.5	300.4	269.8	265.5
65.0	218.6	217.1	237.5	275.8	287.6	295.0	304.0	255.3	234.2	245.1
67.5	183.7	184.4	206.6	252.6	249.1	249.2	255.8	209.3	200.5	213.9
70.0	149.4	152.7	179.2	223.6	205.1	207.2	216.6	178.6	176.7	182.1
72.5	115.5	121.4	151.4	193.9	173.8	176.3	186.9	160.2	164.7	156.4
75.0	82.02	90.55	122.5	165.7	145.9	152.1	159.2	146.1	146.5	133.2
77.5	49.15	59.75	92.75	138.4	119.8	124.2	126.7	123.6	120.9	103.7
80.0	16.96	25.37	49.67	96.77	94.23	93.54	95.93	95.42	94.23	80.35
82.5	0	0	0	13.24	28.32	45.23	64.65	68.81	70.62	62.53
85.0	0	0	0	0	0	0	0	19.59	45.24	45.06
87.5	0	0	0	0	0	0	0	0	0	0
90.0	0	0	0	0	0	0	0	0	0	0
G/C	350.0	355.0								
0.0	1959	1959								
2.5	1953	1955								
5.0	1942	1945								
7.5	1924	1929								
10.0	1901	1907								
12.5	1874	1880								
15.0	1842	1849								
17.5	1806	1814								
20.0	1764	1774								
22.5	1717	1728								
25.0	1661	1675								
27.5	1591	1608								
30.0	1499	1520								
32.5	1386	1409								
35.0	1263	1288								
37.5	1136	1156								
40.0	1004	1016								
42.5	869.1	872.4								
45.0	731.6	724.9								
47.5	596.8	584.5								
50.0	487.2	471.9								
52.5	410.2	390.6								
55.0	356.4	332.4								
57.5	314.0	290.6								
60.0	274.2	256.4								
62.5	238.9	220.5								

C Range: 0 - 360DEG
 C Interval: 5.0DEG
 Test Speed: HIGH
 Temperature: 25.3DEG
 Operators: DAMIN
 Test Date: 2023-06-21

γ Range: 0 - 90DEG
 γ Interval: 0.5DEG
 Test System: EVERFINE GO-2000A_V1 SYSTEM V2.0.286
 Humidity: 65.0%
 Test Distance: 13.420m [K=1.0000]
 Remarks: IL-PN195U(S) 4.000K 32W NW

Photometric Data Table [cd]

65.0	206.8	185.2
67.5	176.1	152.1
70.0	145.4	121.3
72.5	113.2	90.76
75.0	86.71	67.23
77.5	70.88	52.24
80.0	61.45	43.83
82.5	49.69	38.89
85.0	37.32	28.54
87.5	19.43	10.33
90.0	0	0

C Range: 0 - 360DEG
 C Interval: 5.0DEG
 Test Speed: HIGH
 Temperature: 25.3DEG
 Operators: DAMIN
 Test Date: 2023-06-21

γ Range: 0 - 90DEG
 γ Interval: 0.5DEG
 Test System: EVERFINE GO-2000A_V1 SYSTEM V2.0.286
 Humidity: 65.0%
 Test Distance: 13.420m [K=1.0000]
 Remarks: IL-PN195U(S) 4.000K 32W NW